

CertiPath



**TrustManager
Module**

**Are your credentials
SECURE?**



**Are your ID processes
a MANUAL BURDEN?**



You trust your strong **locks**...

Do you trust everyone's **keys**?



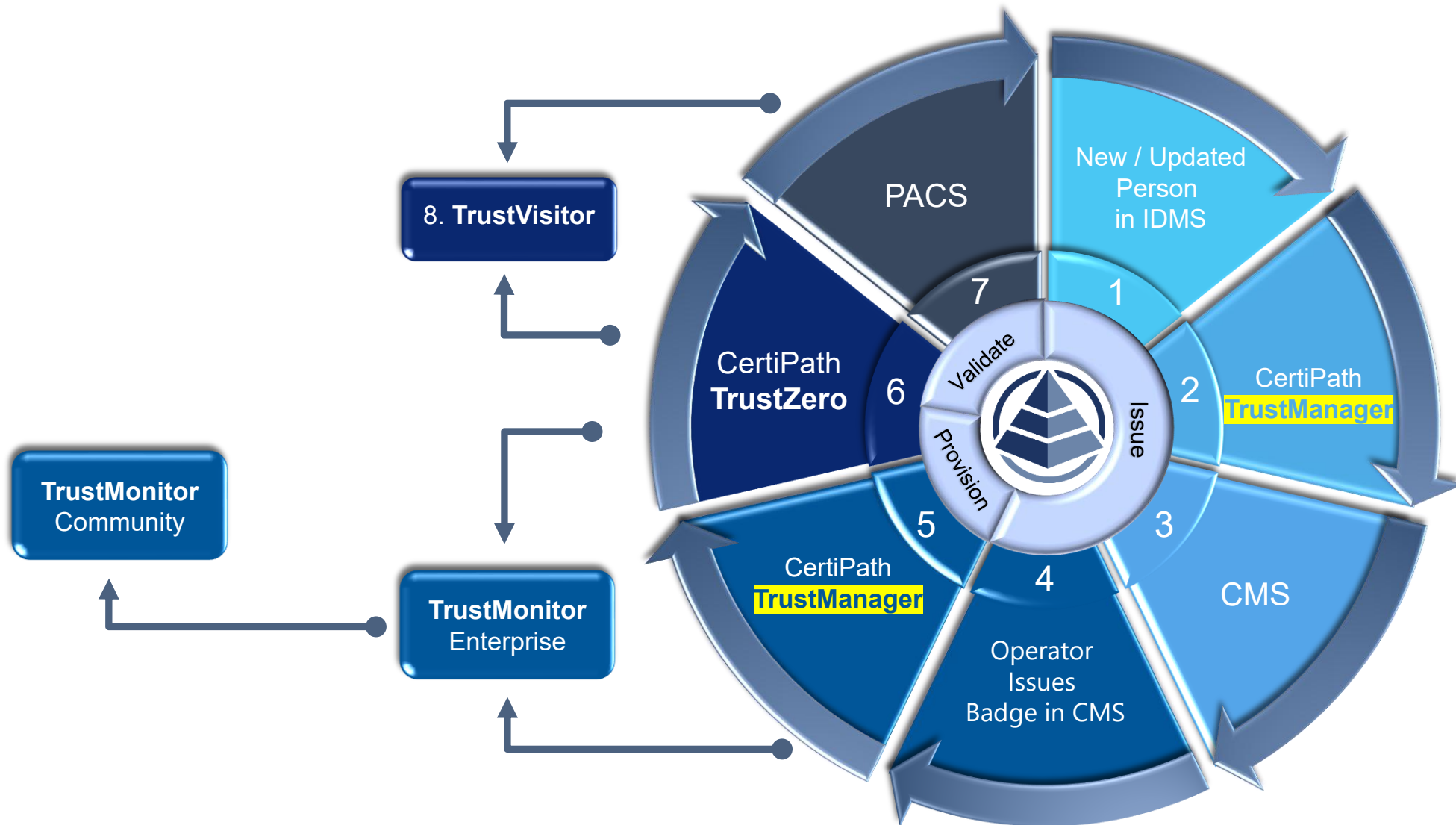
If a KEY is not SECURE, you need to know immediately!

**TrustSuite's industry-leading feature set delivers HIGH ASSURANCE
and AUTOMATES your entire identity management process.**



Your fortified premises must not become a house of (prox) cards

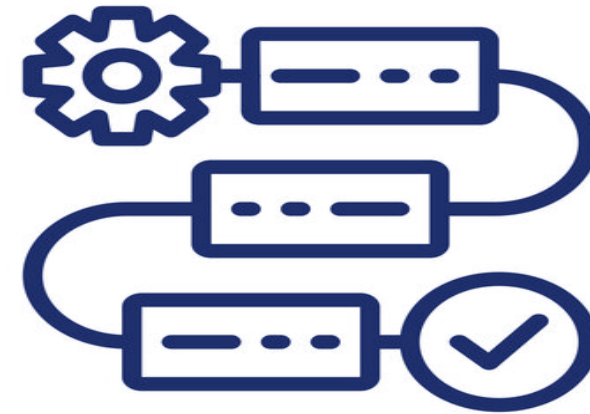
TrustSuite Issuing, Provisioning, and Validation Activities



Key Features TrustManager

TrustManager Overview

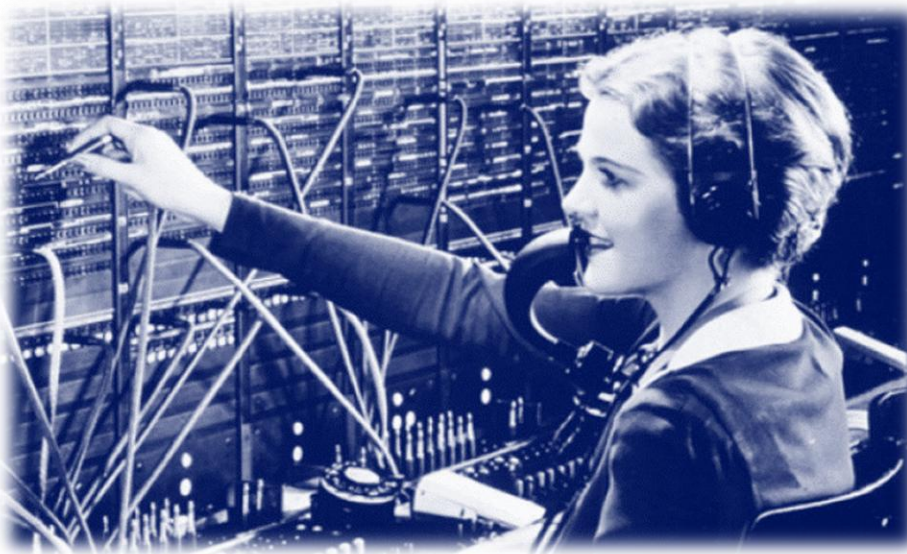
TrustManager is CertiPath's integration solution for **provisioning** of **identity records** and **high assurance credentials** across **PACS**. TrustManager's custom **workflow** tool connects all phases of the **identity lifecycle** in one centralized application.



TrustManager, when paired with **TrustMonitor**, delivers **intercommunity provisioning** to support several disparate organizations that share a trust relationship to form a community.

Our solution provides **automated**:

- Physical access rights to each community member's employees designated as interoperable
- Updates or removal of access when appropriate



TrustManager Feature Summary

- ✓ **FICAM v2** physical identity access manager
- ✓ **Automatically** provision/update/deprovision identity and credential records to any PACS
- ✓ Compatible with all **PIV** applet-based, **proximity-based**, and **dual-hybrid** credentials
- ✓ **Workflow** tool to customize connections to multiple APIs:
 - Pull credential information from CMS or legacy systems
 - Transform data to send to other operational systems
 - Automate intercommunity federal provisioning
 - Receive and send secure system transactions (SFTP)
 - Configure pre/post processing rules
 - Troubleshoot workflows: maintenance mode, exception handling/retries
 - Compare/reconcile/remediate data sets across multiple systems

TrustManager PACS Integrations



TrustManager/Zero/Monitor Differentiators

Key: **X** not supported ✓ partially supported ✓ FULLY SUPPORTED

| Feature | Typical Identity/ Access Management | TrustManager |
|---|--|--------------|
| Manage identity and access across diverse PACS infrastructure, including intercommunity federal provisioning, for e2e identity lifecycle management | X | ✓ |
| Leverage data from smart cards to establish a common identity across government agencies | ✓ | ✓ |
| Interoperable with multiple IDMS , CMS , and PACS | ✓ | ✓ |
| Automate policy across enterprise to eliminate multi-organization or community policies | ✓ | ✓ |
| Workflow tool for custom API connections | X | ✓ |
| Continuous, near real-time validation of credentials and disables revoked credentials in PACS in near real-time | X | ✓ |
| Smart card login authentication | X | ✓ |
| Full support of standalone proximity-based credentials and dual-hybrid smart card/prox tokens | X | ✓ |
| FICAM compliant | X | ✓ |
| Supports Zero-Trust security model | X | ✓ |
| Single application /lower total cost of ownership | X | ✓ |
| Robust business logic tools to automatically enforce access management policies | X | ✓ |

CertiPath

For additional info,
[click here](#)
to visit our TrustSuite Info Portal

IDENTITY



WITHOUT
COMPROMISE

