

CertiPath



TrustSuite

**Identity
Management
Solution**

**Are your credentials
SECURE?**



**Are your ID processes
a MANUAL BURDEN?**



You trust your strong **locks**...

Do you trust everyone's **keys**?



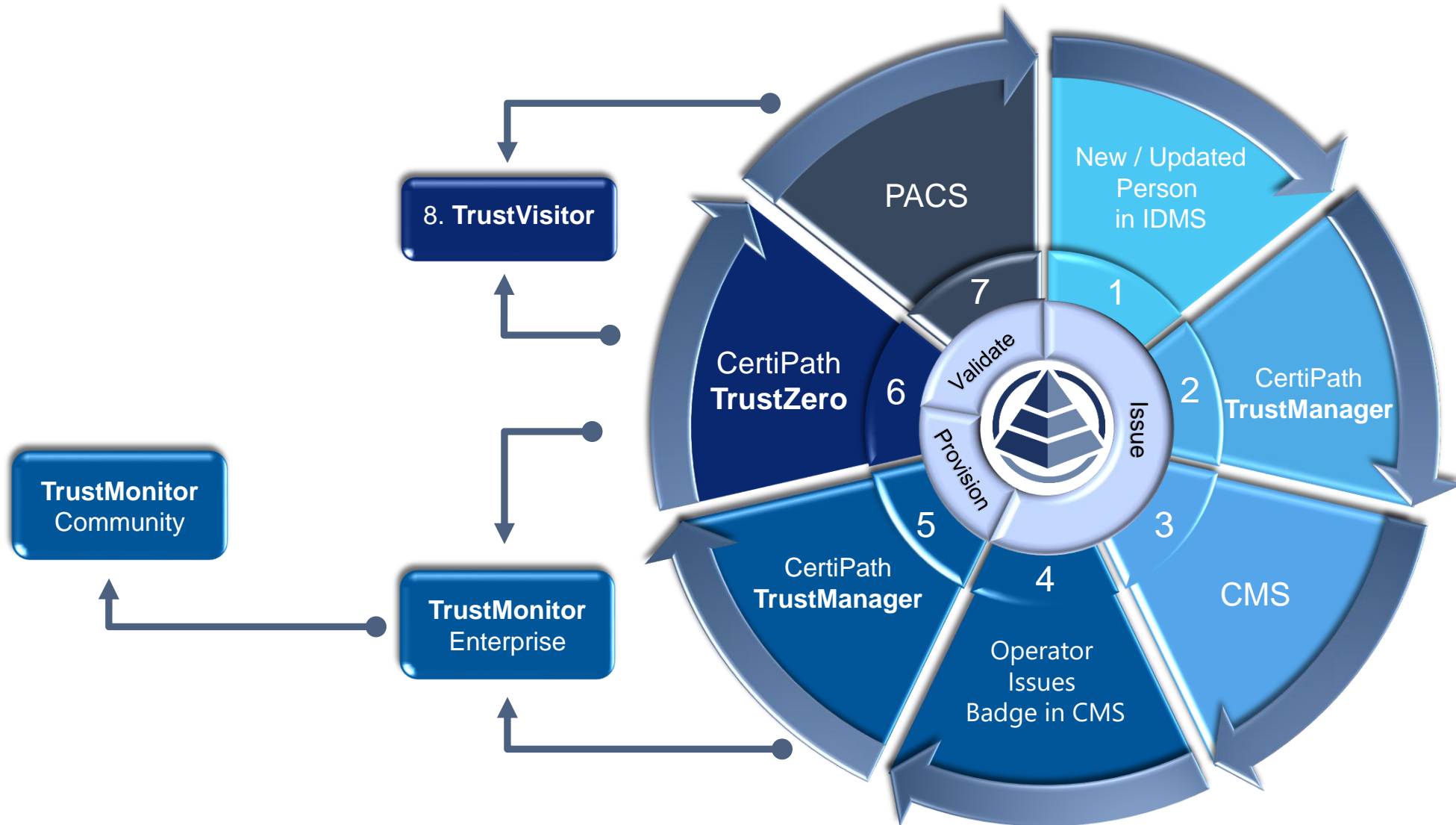
If a KEY is not SECURE, you need to know immediately!

**TrustSuite's industry-leading feature set delivers HIGH ASSURANCE
and AUTOMATES your entire identity management process.**



Your fortified premises must not become a house of (prox) cards

TrustSuite Issuing, Provisioning, and Validation Activities



Key Features

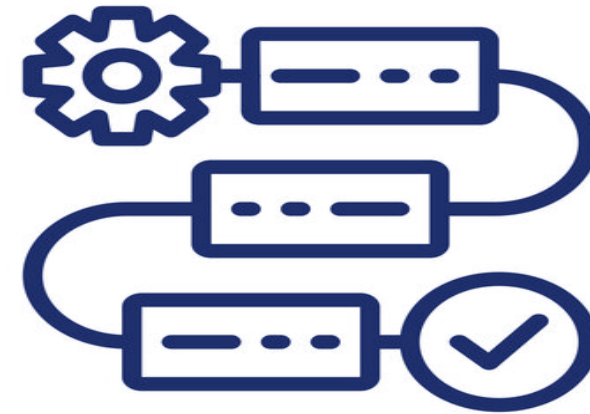
TrustManager

TrustMonitor

TrustZero

TrustManager Overview

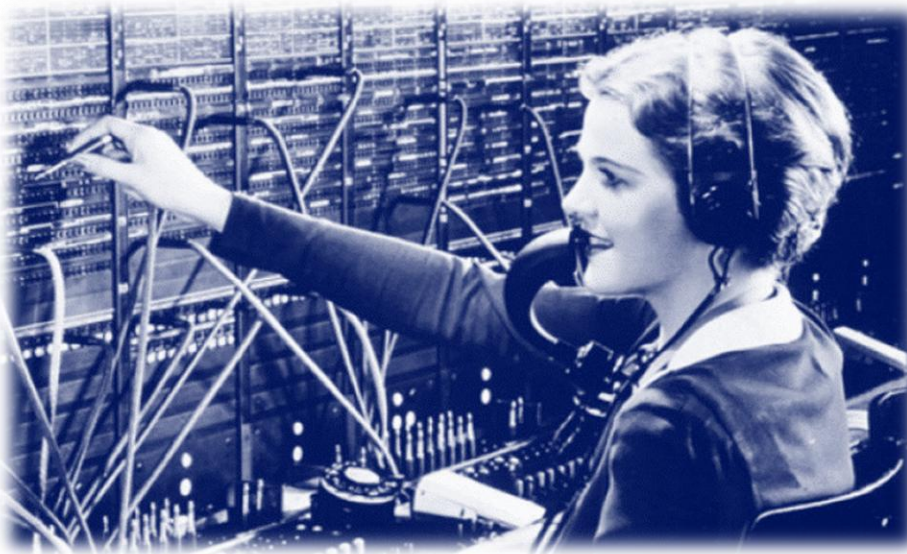
TrustManager is CertiPath's integration solution for **provisioning** of **identity records** and **high assurance credentials** across **PACS**. TrustManager's custom **workflow** tool connects all phases of the **identity lifecycle** in one centralized application.



TrustManager, when paired with **TrustMonitor**, delivers **intercommunity provisioning** to support several disparate organizations that share a trust relationship to form a community.

Our solution provides **automated**:

- Physical access rights to each community member's employees designated as interoperable
- Updates or removal of access when appropriate

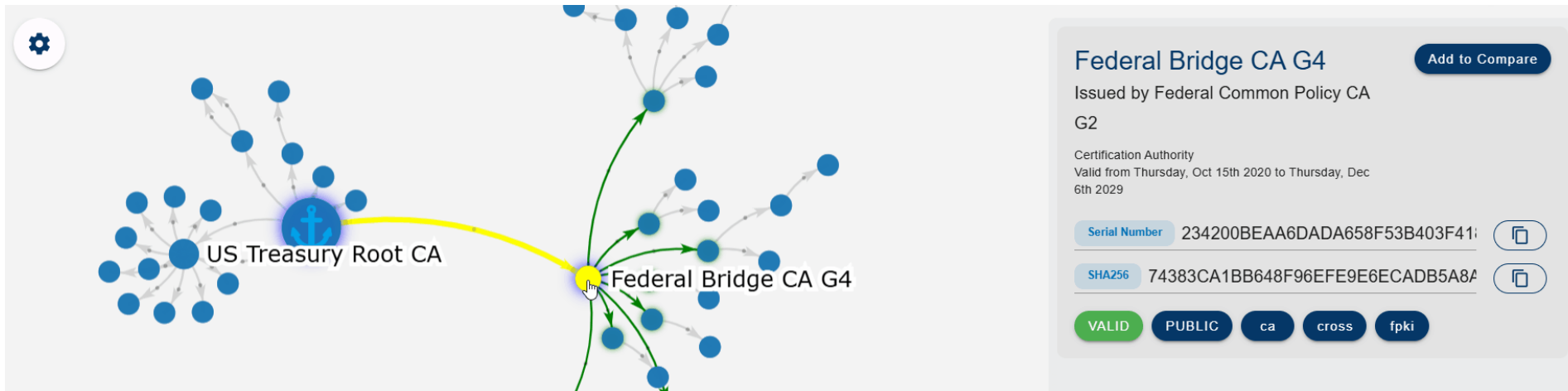


TrustManager Feature Summary

- ✓ **FICAM v2** physical identity access manager
- ✓ **Automatically** provision/update/deprovision identity and credential records to any PACS
- ✓ Compatible with all **PIV** applet-based, **proximity-based**, and **dual-hybrid** credentials
- ✓ **Workflow** tool to customize connections to multiple APIs:
 - Pull credential information from CMS or legacy systems
 - Transform data to send to other operational systems
 - Automate intercommunity federal provisioning
 - Receive and send secure system transactions (SFTP)
 - Configure pre/post processing rules
 - Troubleshoot workflows: maintenance mode, exception handling/retries
 - Compare/reconcile/remediate data sets across multiple systems

TrustMonitor Overview

- Public, community, and enterprise-specific settings
- Near-real time validation of credentials
- Focuses on PKI credentials and issuers trusted via the US Federal Bridge
- Private instances for any roots of trust an enterprise/community may also wish to monitor



- Proactively tracks and “pushes” updated credential information to achieve quicker propagation and synchronization of credential status changes
- Streamlines the configuration of the trust path, ensuring accurate status
- Enables configurable constraints at a global and local level when using TrustZero

TrustZero Overview

TrustZero is CertiPath's **high-assurance** credential **validation** solution that provides robust **business logic** and **configurability** for a PACS' response to a range of validation conditions

The Problem: Dangerous Validation Time Lag

Current validation systems suffer from “**revocation blindness**,” a credential revocation typically takes **36 hours** to impact what happens at a door.

The Solution: TrustZero & TrustMonitor

Achieve near real-time knowledge of credentials via a sophisticated layer of status-checking techniques, which reduces this operational blind spot to **2 minutes**.



Would you hire blind Security Officers?



Would you give Lobby Guards 36-hour breaks?

TrustZero and TrustMonitor Feature Summary

- ✓ Enterprise-level **continuous validation**
- ✓ **Near-Real-Time revocation**
- ✓ **VIP** privileged credentials
- ✓ Configurable **extended validity period** / **degraded mode** settings
- ✓ Validation **enforcement** options
- ✓ **Single network** location for all validation queries
- ✓ Validate all credentials within complex **trust communities**
- ✓ **Realtime automated trust list pruning** with no manual checks

TrustManager and TrustZero PACS Integrations



Key Features



TrustVisitor® Overview



TrustVisitor is CertiPath's solution for **high-assurance visitor management** for secure facilities.

TrustVisitor determines who a visitor is and then evaluates what **credential** they possess and if it will interoperate with all **PACS access points** the visitor will traverse.

The platform has been designed from the ground up with a specific view toward **high assurance** compliance.

TrustVisitor helps organizations achieve **compliance** with HSPD-12, M-19-17, and National Institute of Standards and Technology (NIST) Special Publication (SP) 800-116-1.

TrustVisitor Workflows: Power + Flexibility

■ Visitor Information

- Customize visitor registration by location

■ Workflow Evaluators

- Register with a Smart Card?
- New or Returning Visitor?
- Accept Agreement?
- Response to any User Defined Field

■ Actions

- Require Custom Approval Step(s)
- Require Background Check
- Auto Approve
- Auto Reject
- Customize an Existing Notification
- Create a New Notification
- Require Event Preauthorization

■ User Defined Fields (“UDFs”)

- Set as Mandatory/Optional
- Set visibility to Lobby Guard and/or Approver
- Tooltip/Help Text
- Interactive preview window
- Customize display order
- Library for common values (states, countries)

■ Supported User Defined Field Types:

- Date
- Display Text
- Display URL
- Drop Down Select
- File Upload
- Switch/Check Box
- Free Text
- Radio Button

TrustVisitor Feature Summary

- ✓ Orchestrate and automate disparate visitor management processes with **workflow customization**
- ✓ Tailor data collected during visitor registration, by location, via **user defined fields**
- ✓ Automatically create high-assurance events through a **calendar tool**
- ✓ Accept and **validate** visitors' electronic credentials from pre-registration *through* the event start time
- ✓ Approve/Reject visitors via **email** or through an **Approvers module**
- ✓ Integrate with any **background check** service, with option to **re-run** background check on demand
- ✓ Automatically provision approved visitors into the PACS for the **duration of their event**
- ✓ Provision **temporary credentials** to non-smart card visitors or to employees who forgot their badges
- ✓ Provide access quickly and easily to **VIPs** and to **Unregistered** and **Unscheduled visitors**
- ✓ Enable visitors to check in for events via a touchless **kiosk**
- ✓ Print **paper** visitor badges
- ✓ View badge status and visitor history **reports**
- ✓ Bind a **scanned ID** to a visitor record or create a **new visitor record** from an ID scan

TrustVisitor Integrations

PACS



Validation Systems





TrustSuite

Feature Summary

CertiPath

➤ Your “**keys**” integrator

➤ Simplifies **High Assurance** credentials

➤ **Automates** the full credential enablement process

➤ Accommodates **High Assurance credentials** and **PACS** for all types of **employees** and **visitors**

➤ Supports **full High Assurance** credentials and PACS, and those that have **yet to fully migrate** to High Assurance

✓ **Trust** your locks and keys

✓ **Remove** dependency on **prox** credentials

✓ **Eliminate** manual **PACS/Badging enrollment** stations

✓ Secure **employee** badges on **day 1**, ensure **visitor** badges have **tailored provisioning** for visit

✓ Transition to **high assurance compliance** at your pace based on your organization’s unique **risk tolerance** and **readiness**

TrustSuite


TrustManager/Zero/Monitor Differentiators

Key: ✗ not supported ✓ partially supported ✓ FULLY SUPPORTED

Feature	Typical Identity/ Access Management	TrustManager	TrustManager with TrustZero/TrustMonitor
Manage identity and access across diverse PACS infrastructure, including intercommunity federal provisioning, for e2e identity lifecycle management	✗	✓	✓
Leverage data from smart cards to establish a common identity across government agencies	✓	✓	✓
Interoperable with multiple IDMS , CMS , and PACS	✓	✓	✓
Automate policy across enterprise to eliminate multi-organization or community policies	✓	✓	✓
Workflow tool for custom API connections	✗	✓	✓
Continuous, near real-time validation of credentials and disables revoked credentials in PACS in near real-time	✗	✓	✓
Smart card login authentication	✗	✓	✓
Full support of standalone proximity-based credentials and dual-hybrid smart card/prox tokens	✗	✓	✓
FICAM compliant	✗	✓	✓
Supports Zero-Trust security model	✗	✓	✓
Single application /lower total cost of ownership	✗	✓	✓
Robust business logic tools to automatically enforce access management policies	✗	✓	✓

TrustVisitor Differentiators

Key: **X** not supported ✓ partially supported **✓ FULLY SUPPORTED**

Feature	Commercial Visitor Management	Typical High Assurance Visitor Management	 TrustVisitor
Fully HSPD-12/FICAM compliant	X	✓	✓
Scheduled, unscheduled , and unregistered visitors	✓	✓	✓
Clientless email and calendar integration	X	X	✓
Background check integration	✓	✓	✓
Preregister a personal electric credential remotely	X	X	✓
Assign a temporary electronic credential	X	✓	✓
Fully customizable event and visitor workflows , driven by user defined fields	X	✓	✓
Secure multi-tenant enterprise functionality	X	✓	✓
Provision tailored visitor access in facility access control system with continuous validation	X	✓	✓
Interoperable with multiple PACS at one facility	X	X	✓
Fast and secure VIP visitor process	✓	✓	✓
Touchless kiosk check-in	✓	✓	✓
Employee and visitor wellness pre-screening	✓	✓	✓
Assign a temporary credential for a forgotten employee badge	X	X	✓

CertiPath

For additional info,
[click here](#)
to visit our TrustSuite Info Portal

IDENTITY



WITHOUT
COMPROMISE

