

CertiPath



**TrustManager
Module**

**Are your credentials
SECURE?**



**Are your ID processes
a MANUAL BURDEN?**



You trust your strong **locks**...

Do you trust everyone's **keys**?



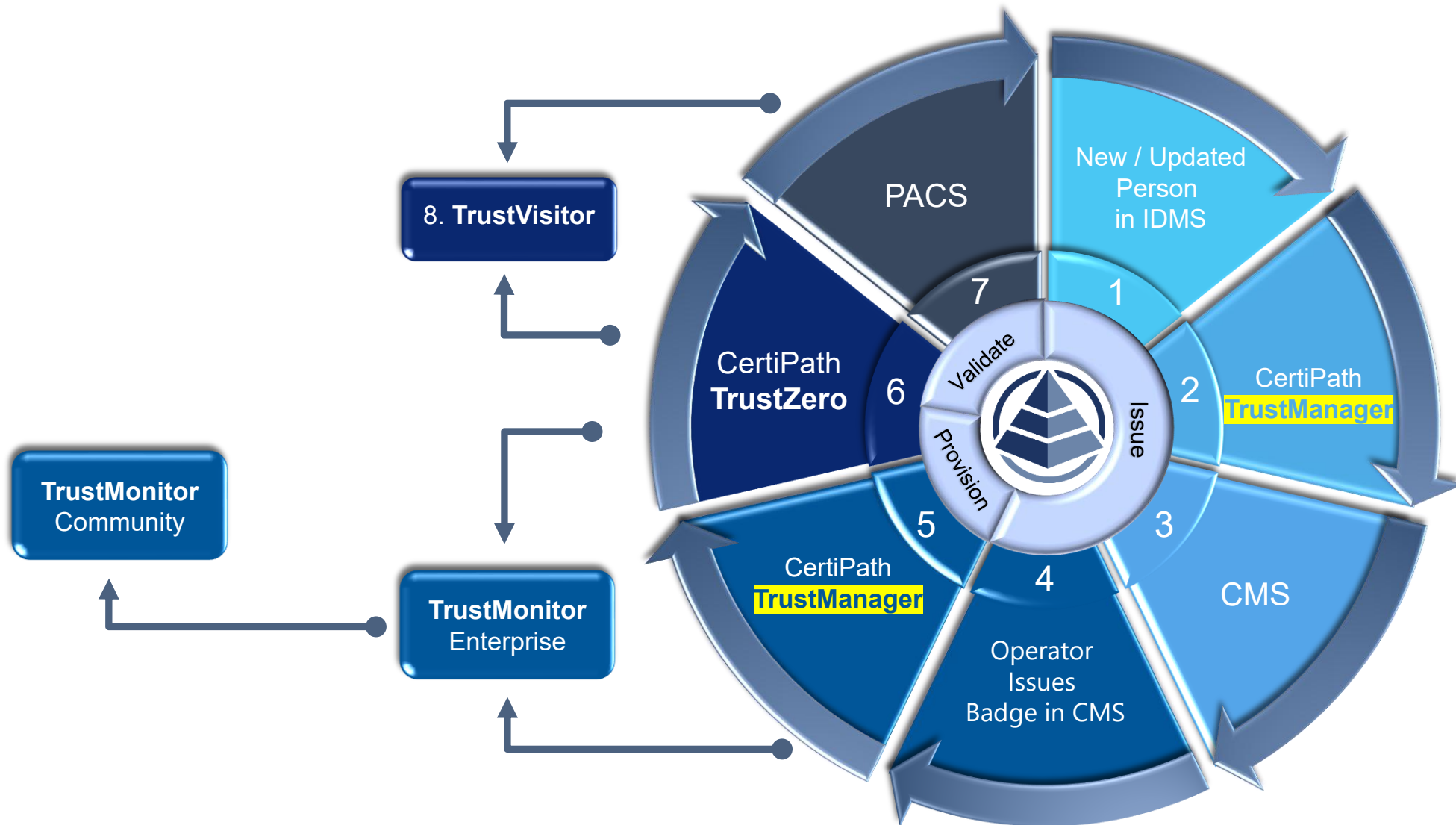
If a KEY is not SECURE, you need to know immediately!

**TrustSuite's industry-leading feature set delivers HIGH ASSURANCE
and AUTOMATES your entire identity management process.**



Your fortified premises must not become a house of (prox) cards

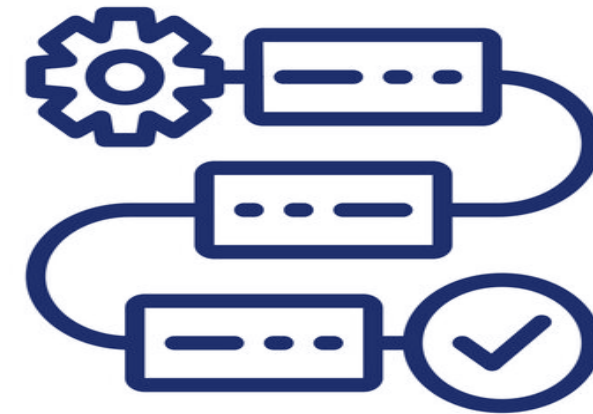
TrustSuite Issuing, Provisioning, and Validation Activities



Key Features TrustManager

TrustManager Overview

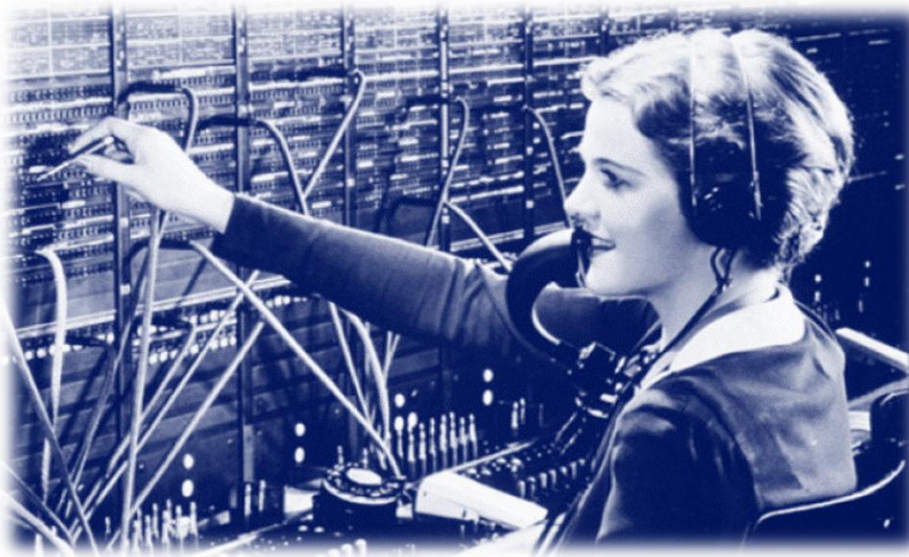
TrustManager is CertiPath's integration solution for **provisioning of identity records** and **high assurance credentials** across **PACS**. TrustManager's custom **workflow** tool connects all phases of the **identity lifecycle** in one centralized application.



TrustManager, when paired with **TrustMonitor**, delivers **intercommunity provisioning** to support several disparate organizations that share a trust relationship to form a community.

Our solution provides **automated**:

- Physical access rights to each community member's employees designated as interoperable
- Updates or removal of access when appropriate



TrustManager Feature Summary

- ✓ **FICAM v2** physical identity access manager
- ✓ **Automatically** provision/update/deprovision identity and credential records to any PACS
- ✓ **Self-enrollment** feature (SnapEnroll)
- ✓ Compatible with all **PIV** applet-based, **proximity-based**, and **dual-hybrid** credentials
- ✓ **Workflow** tool to customize connections to multiple APIs:
 - Pull credential information from CMS or legacy systems
 - Transform data to send to other operational systems
 - Automate intercommunity federal provisioning
 - Receive and send secure system transactions (SFTP)
 - Configure pre/post processing rules
 - Troubleshoot workflows: maintenance mode, exception handling/retries
 - Compare/reconcile/remediate data sets across multiple systems

TrustManager PACS Integrations



CertiPath

For additional info,
[click here](#)
to visit our TrustSuite Info Portal

IDENTITY



WITHOUT
COMPROMISE

